

Maintenance Guide

Low Profile Hydraulic Torque Wrench

TX Series LINK



torcUP™

Maintenance Supplies

2.



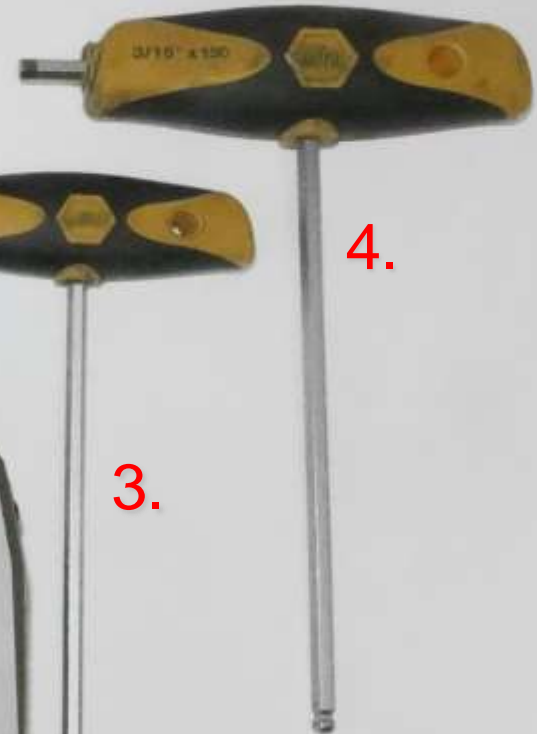
1.



3.



4.



1. TX Link 2. Marine moly 3. 5/32" allen wrench 4. 3/16" allen wrench

TX Low Profile
Hydraulic Torque Wrenches

TorcUP Industrial Bolting Tools
1025 Conroy Place Easton, PA 18040 USA
E: sales@torcup.com W: www.torcup.com
P: +1 610-250-5800 F: +1 610-250-2700

Detach ratchet link from cylinder.
Remove 1st lower spacer screw
using 3/16" allen wrench



Remove 2nd lower
spacer screw using 3/16"
allen wrench



Remove 1st upper
spacer screw using
5/32" allen wrench



TX Low Profile
Hydraulic Torque Wrenches

TorcUP Industrial Bolting Tools
1025 Conroy Place Easton, PA 18040 USA
E: sales@torcup.com W: www.torcup.com
P: +1 610-250-5800 F: +1 610-250-2700

Remove 2nd upper
spacer screw
using 5/32"
allen wrench



TX Low Profile
Hydraulic Torque Wrenches

TorcUP Industrial Bolting Tools
1025 Conroy Place Easton, PA 18040 USA
E: sales@torcup.com W: www.torcup.com
P: +1 610-250-5800 F: +1 610-250-2700

Remove ratchet link sideplate



Remove ratchet link sideplate



Image shown illustrates
factory assembly using
Mobil 1 synthetic grease

TX Low Profile
Hydraulic Torque Wrenches

TorcUP Industrial Bolting Tools
1025 Conroy Place Easton, PA 18040 USA
E: sales@torcup.com W: www.torcup.com
P: +1 610-250-5800 F: +1 610-250-2700

Remove ratchet, drive plate
and drive segment



TX Low Profile
Hydraulic Torque Wrenches

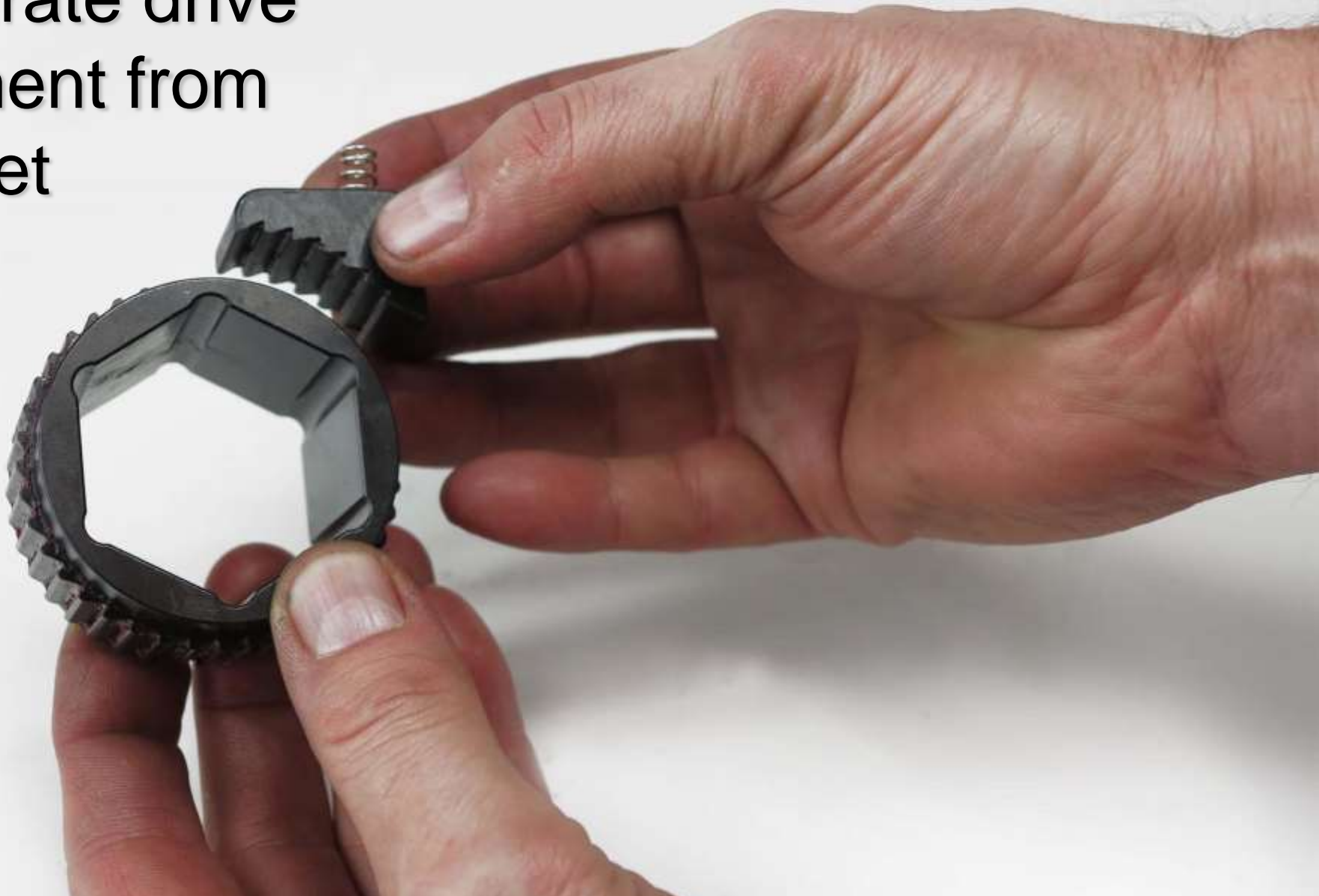
TorcUP Industrial Bolting Tools
1025 Conroy Place Easton, PA 18040 USA
E: sales@torcup.com W: www.torcup.com
P: +1 610-250-5800 F: +1 610-250-2700

Slide ratchet from drive plate



Be aware of tension on segment spring
to prohibit spring ejection

Separate drive
segment from
ratchet



TX Low Profile
Hydraulic Torque Wrenches

TorcUP Industrial Bolting Tools
1025 Conroy Place Easton, PA 18040 USA
E: sales@torcup.com W: www.torcup.com
P: +1 610-250-5800 F: +1 610-250-2700

Clean and inspect tool



TX Low Profile
Hydraulic Torque Wrenches

TorcUP Industrial Bolting Tools
1025 Conroy Place Easton, PA 18040 USA
E: sales@torcup.com W: www.torcup.com
P: +1 610-250-5800 F: +1 610-250-2700

Use marine grade moly lube



Mobil 1 synthetic
grease also suitable

TX Low Profile
Hydraulic Torque Wrenches

TorcUP Industrial Bolting Tools
1025 Conroy Place Easton, PA 18040 USA
E:sales@torcup.com W:www.torcup.com
P: +1 610-250-5800 F: +1 610-250-2700

Grease inside of drive plate



TX Low Profile
Hydraulic Torque Wrenches

TorcUP Industrial Bolting Tools
1025 Conroy Place Easton, PA 18040 USA
E: sales@torcup.com W: www.torcup.com
P: +1 610-250-5800 F: +1 610-250-2700



Grease inside
of sideplate

TX Low Profile
Hydraulic Torque Wrenches

TorcUP Industrial Bolting Tools
1025 Conroy Place Easton, PA 18040 USA
E: sales@torcup.com W: www.torcup.com
P: +1 610-250-5800 F: +1 610-250-2700

Grease inside bronze sleeves



TX Low Profile
Hydraulic Torque Wrenches

TorcUP Industrial Bolting Tools
1025 Conroy Place Easton, PA 18040 USA
E:sales@torcup.com W:www.torcup.com
P: +1 610-250-5800 F: +1 610-250-2700

Grease inside
of sideplate



TX Low Profile
Hydraulic Torque Wrenches

TorcUP Industrial Bolting Tools
1025 Conroy Place Easton, PA 18040 USA
E: sales@torcup.com W: www.torcup.com
P: +1 610-250-5800 F: +1 610-250-2700

Wrong Direction



Correct Direction



TX Low Profile
Hydraulic Torque Wrenches

TorcUP Industrial Bolting Tools
1025 Conroy Place Easton, PA 18040 USA
E:sales@torcup.com W:www.torcup.com
P: +1 610-250-5800 F: +1 610-250-2700

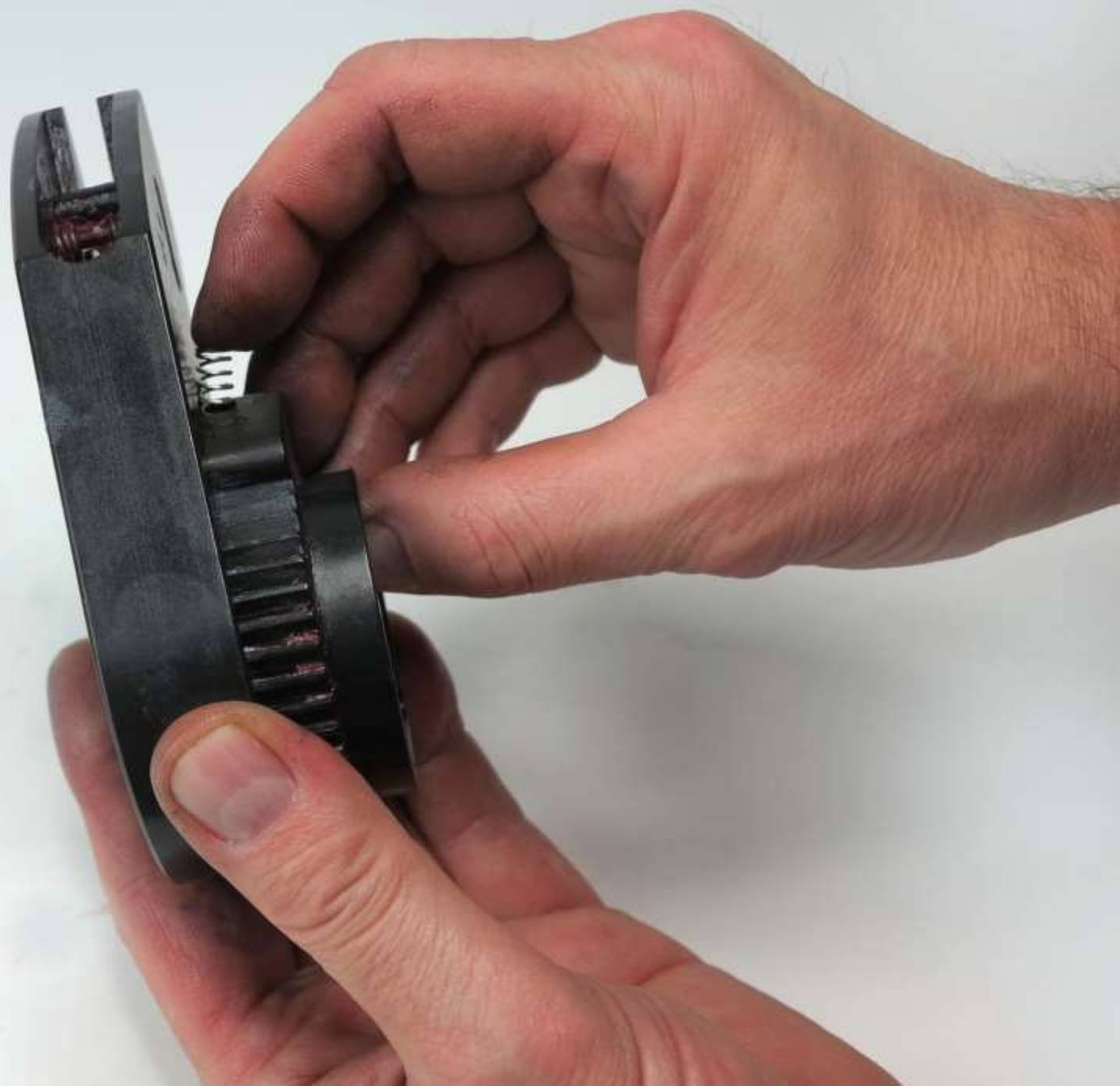
Align ratchet and drive
segment with drive plate



TX Low Profile
Hydraulic Torque Wrenches

TorcUP Industrial Bolting Tools
1025 Conroy Place Easton, PA 18040 USA
E: sales@torcup.com W: www.torcup.com
P: +1 610-250-5800 F: +1 610-250-2700

Insert drive
segment spring
and press into
drive plate



TX Low Profile
Hydraulic Torque Wrenches

TorcUP Industrial Bolting Tools
1025 Conroy Place Easton, PA 18040 USA
E:sales@torcup.com W:www.torcup.com
P: +1 610-250-5800 F: +1 610-250-2700



Assembled drive
plate and ratchet

TX Low Profile
Hydraulic Torque Wrenches

TorcUP Industrial Bolting Tools
1025 Conroy Place Easton, PA 18040 USA
E:sales@torcup.com W:www.torcup.com
P: +1 610-250-5800 F: +1 610-250-2700



Replace ratchet
into side plate

TX Low Profile
Hydraulic Torque Wrenches

TorcUP Industrial Bolting Tools
1025 Conroy Place Easton, PA 18040 USA
E: sales@torcup.com W: www.torcup.com
P: +1 610-250-5800 F: +1 610-250-2700

Replace sideplate



TX Low Profile
Hydraulic Torque Wrenches

TorcUP Industrial Bolting Tools
1025 Conroy Place Easton, PA 18040 USA
E: sales@torcup.com W: www.torcup.com
P: +1 610-250-5800 F: +1 610-250-2700

Reinsert bottom space screws
using a 3/16" allen wrench



TX Low Profile
Hydraulic Torque Wrenches

TorcUP Industrial Bolting Tools
1025 Conroy Place Easton, PA 18040 USA
E: sales@torcup.com W: www.torcup.com
P: +1 610-250-5800 F: +1 610-250-2700

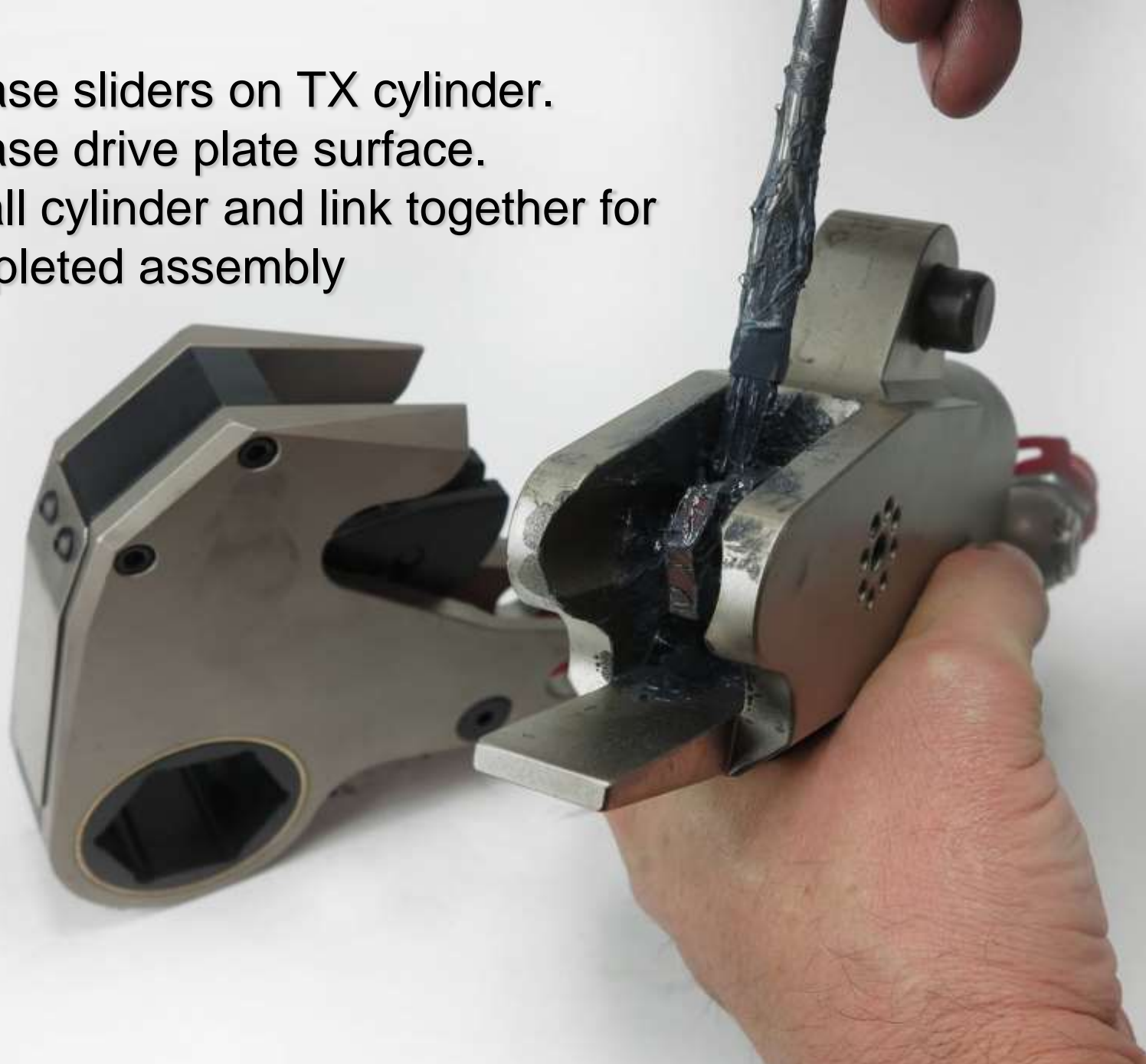
Reinsert upper spacer
screws using a 5/32"
allen wrench



TX Low Profile
Hydraulic Torque Wrenches

TorcUP Industrial Bolting Tools
1025 Conroy Place Easton, PA 18040 USA
E: sales@torcup.com W: www.torcup.com
P: +1 610-250-5800 F: +1 610-250-2700

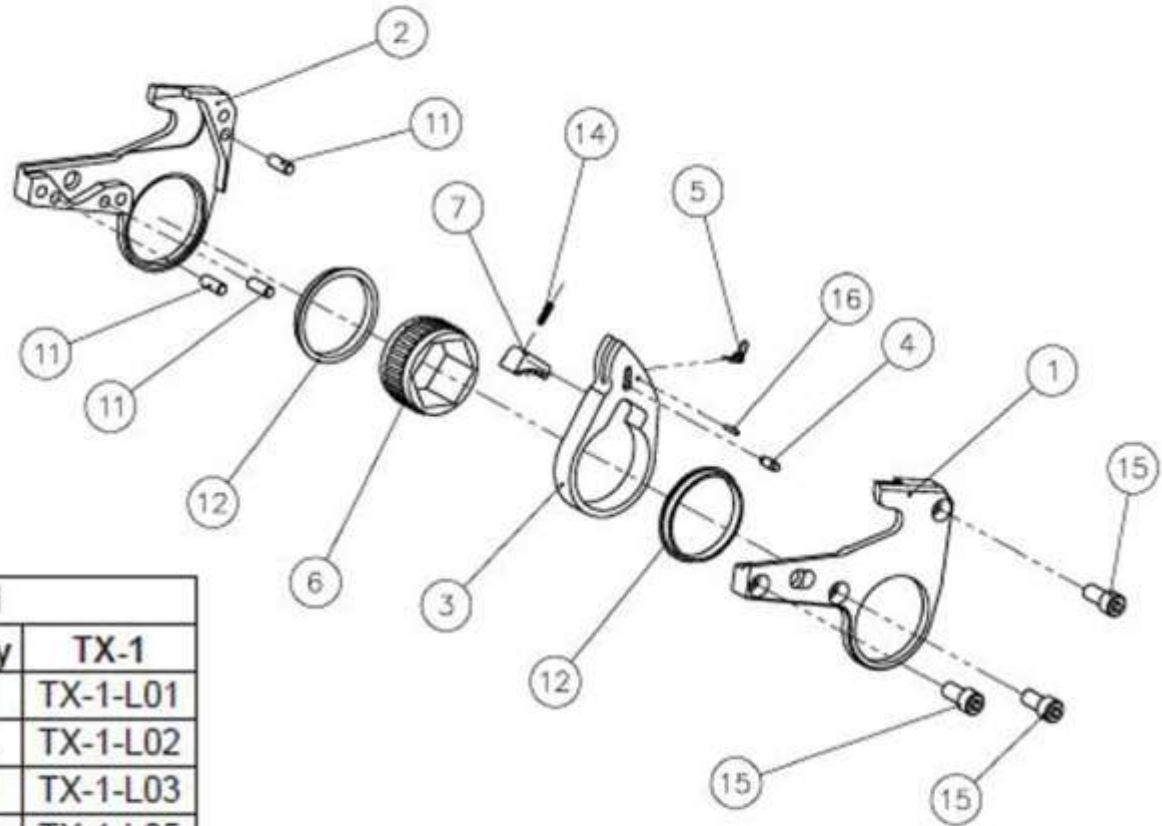
Grease sliders on TX cylinder.
Grease drive plate surface.
Install cylinder and link together for
completed assembly



TX Low Profile
Hydraulic Torque Wrenches

TorcUP Industrial Bolting Tools
1025 Conroy Place Easton, PA 18040 USA
E: sales@torcup.com W: www.torcup.com
P: +1 610-250-5800 F: +1 610-250-2700

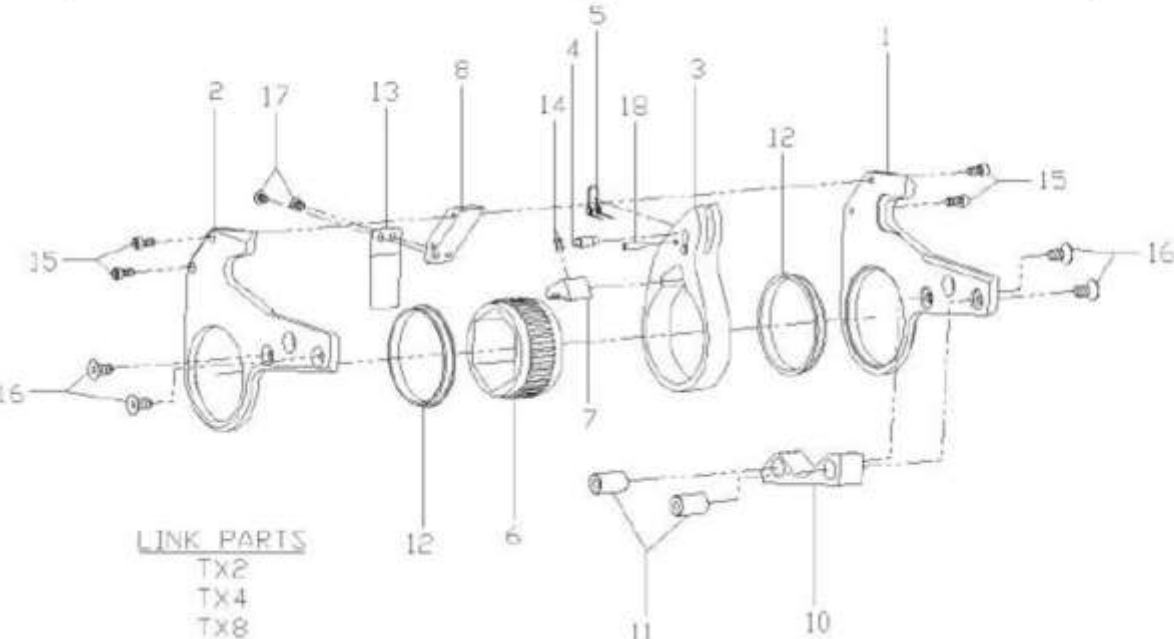
TX-1 Link Part Breakdown



TX-1 LINK PARTS BREAKDOWN			
	Part	Qty	TX-1
1	TX-1 SIDE PLATE - LEFT	1	TX-1-L01
2	TX-1 SIDE PLATE - RIGHT	1	TX-1-L02
3	TX-1 DRIVE PLATE - SIZE	1	TX-1-L03
4	TX-1 DRIVE PIN	1	TX-1-L05
5	TX-1 DRIVE PIN SPRING	1	TX-1-L07
6	TX-1 RATCHET	1	TX-1-L09
7	TX-1 DRIVE SEGMENT	1	TX-1-L11
11	TX-1 SPACER PIN	3	TX-1-L17
12	TX-1 SIDEPLATE SLEEVES	2	TX-1-L19
14	TX-1 SEGMENT SPRING	1	TX-1-L23
15	TX-1 SIDE PLATE SCREWS	3	TX-1-L25
16	TX-1 ROLLPIN D. PIN SPRING	1	TX-1-L31

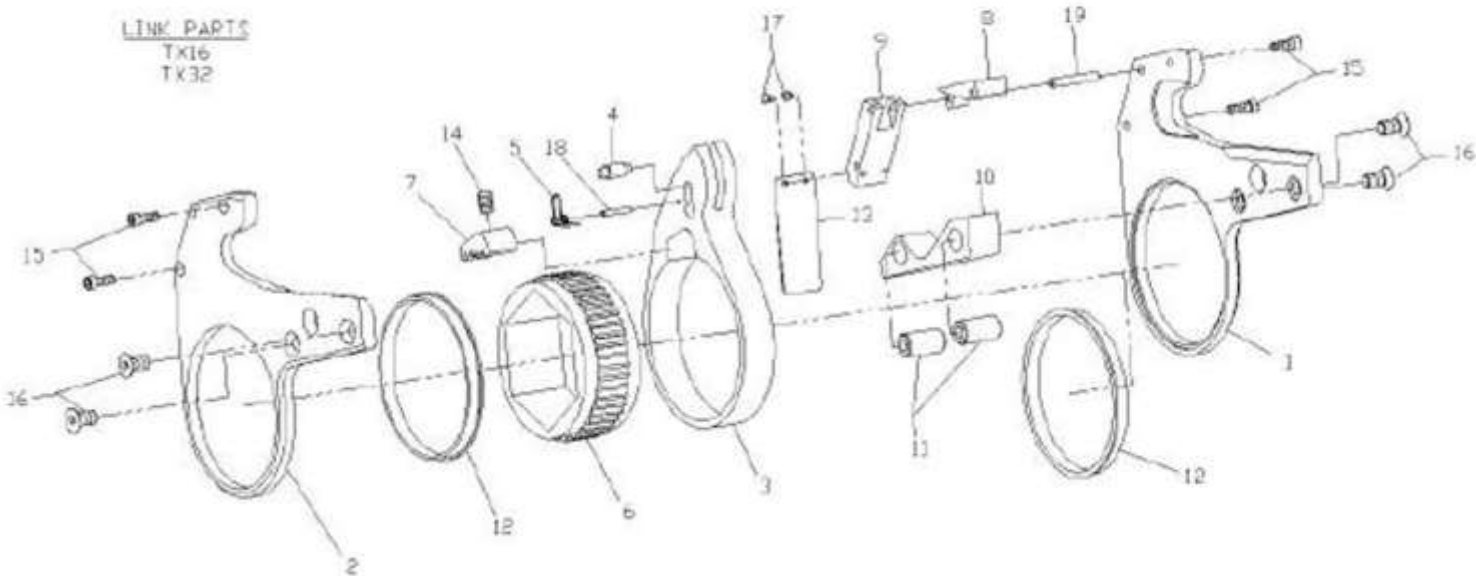
TX-2, TX-4, TX-8 SERIES LINK

TX Link Breakdown



LINK PARTS
TX2
TX4
TX8

TX-16, TX-32 SERIES LINK



LINK PARTS
TX16
TX32

TX Link Breakdown

	Part	TX-2	TX-4	TX-8	TX-16	TX-32
1	SIDE PLATE - L	TX-2-L01	TX-4-L01	TX-8-L01	TX-16-L01	TX-32-L01
2	SIDE PLATE - R	TX-2-L02	TX-4-L02	TX-8-L02	TX-16-L02	TX-32-L02
3	DRIVE PLATE	TX-2-L03	TX-4-L03	TX-8-L03	TX-16-L03	TX-32-L03
4	DRIVE PIN	TX-2-L05	TX-4-L05	TX-8-L05	TX-16-L05	TX-32-L05
5	DRIVE PIN SPRING	TX-2-L07	TX-4-L07	TX-8-L07	TX-16-L07	TX-32-L07
6	RATCHET	TX-2-L09	TX-4-L09	TX-8-L09	TX-16-L09	TX-32-L09
7	DRIVE SEGMENT	TX-2-L11	TX-4-L11	TX-8-L11	TX-16-L11	TX-32-L11
8	UPPER SPACER	TX-2-L13	TX-4-L13	TX-8-L13	TX-16-L13	TX-32-L13
9	MIDDLE SPACER	N/A	N/A	N/A	TX-16-L14	TX-32-L14
10	LOWER SPACER	TX-2-L15	TX-4-L15	TX-8-L15	TX-16-L15	TX-32-L15
11	LOWER SPACER PIN	TX-2-L17	TX-4-L17	TX-8-L17	TX-16-L17	TX-32-L17
12	SLEEVES - SIDEPLATE	TX-2-L19	TX-4-L19	TX-8-L19	TX-16-L19	TX-32-L19
13	SHROUD	TX-2-L21	TX-4-L21	TX-8-L21	TX-16-L21	TX-32-L21
14	SEGMENT SPRING	TX-2-L25	TX-4-L25	TX-8-L25	TX-16-L25	TX-32-L25
15	SCREWS - UPPER SPACER	TX-2-L27	TX-4-L27	TX-8-L27	TX-16-L27	TX-32-L27
16	SCREWS - LOWER SPACER	TX-2-L29	TX-4-L29	TX-8-L29	TX-16-L29	TX-32-L29
17	SHROUD SCREWS	TX-2-L31	TX-4-L31	TX-8-L31	TX-16-L31	TX-32-L31
18	DRIVE PIN SPRING ROLL PIN	TX-2-L33	TX-4-L33	TX-8-L33	TX-16-L33	TX-32-L33
19	SPACER ROLL PIN	N/A	N/A	N/A	TX-16-35	TX-32-L35

Note: For TX-45, reference TX-32 links



You have just completed the
Maintenance Guide.

For additional questions please contact:

TorcUP Inc.

1025 Conroy Place

Easton, PA 18040

sales@torcup.com

www.torcup.com

TorcUP Inc. is not responsible for customer modification of tools for applications on which TorcUP Inc was not consulted.
Refer to the tool manual for safety and regulations.